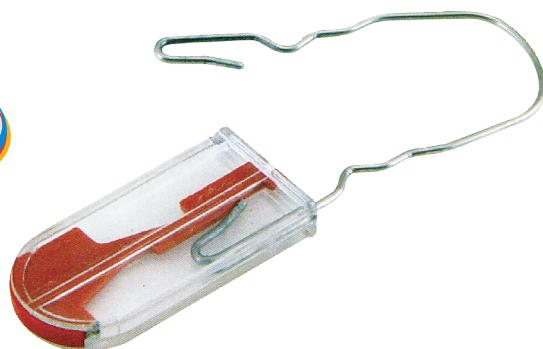
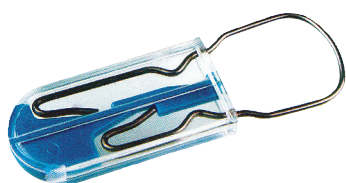
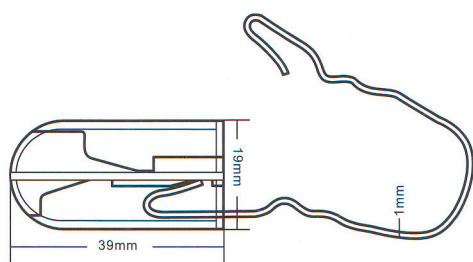


Model number HS102



Packing

2000pcs into a carton.

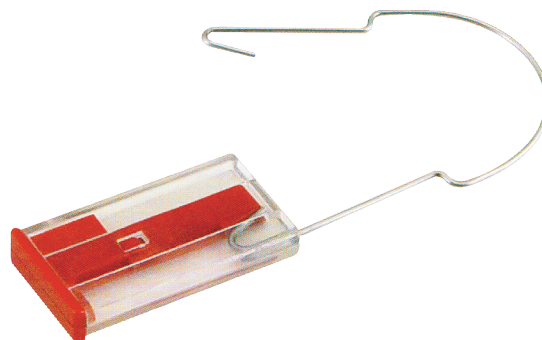
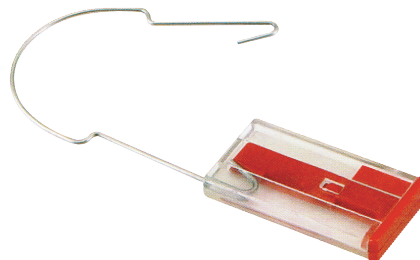
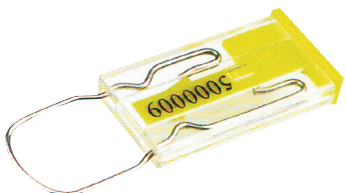
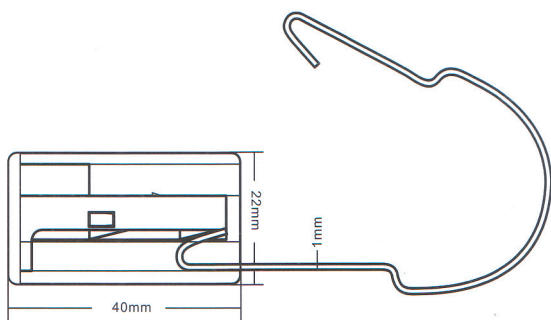
Measure: 410 mm*225 mm*215 mm

Gross weight: 11.0 Kgs

Net weight: 10.0 Kgs

Wire: (a) scored / (b) no scored

Model number HS108



Packing

2000pcs into a carton.

Measure: 405 mm*245 mm*230 mm

Gross weight: 14.0 Kgs

Net weight: 13.0 Kgs

Wire: (a) scored / (b) no scored



21 años
de experiencia

Ing. Fernando Farah Ch.

Gerente General

FACH S.A.

www.fachsa.com

Dirección:

Km. 1.5 vía Samborondón SBC Office Center Piso 3 Of.24

Telf.: (5934) 2831200 / 2831240 / 2837892

Celular: 0994501929 / **e-mail:** info@fachsa.com

Magic Jack: 407-BUY-FACH

- Sellos de seguridad para todas las industrias con **ISOPAS17712**
- Termómetros de temperatura, tiempo y humedad
- Termógrafos para contenedores • Equipos de refrigeración